

How to make
a Time-Space Travel Device
for the Unification of Humanity
by
Seann Brackin

2007

What if we could see through a hundred eyes at once and understand what we are seeing.

With the power of imagination's mystic jet booster rockets we can go anywhere.

Gravity free thought.

A pool of mind.

Powered by thought energy we can share time like a meal.

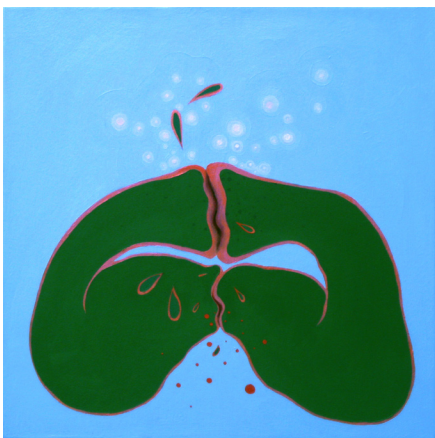
A part of an enormous cosmic whirlpool where life is the most rare element,

I imagine myself a slow nuclear explosion reflecting light, dust, air, sound, ideas and emotions into the world.

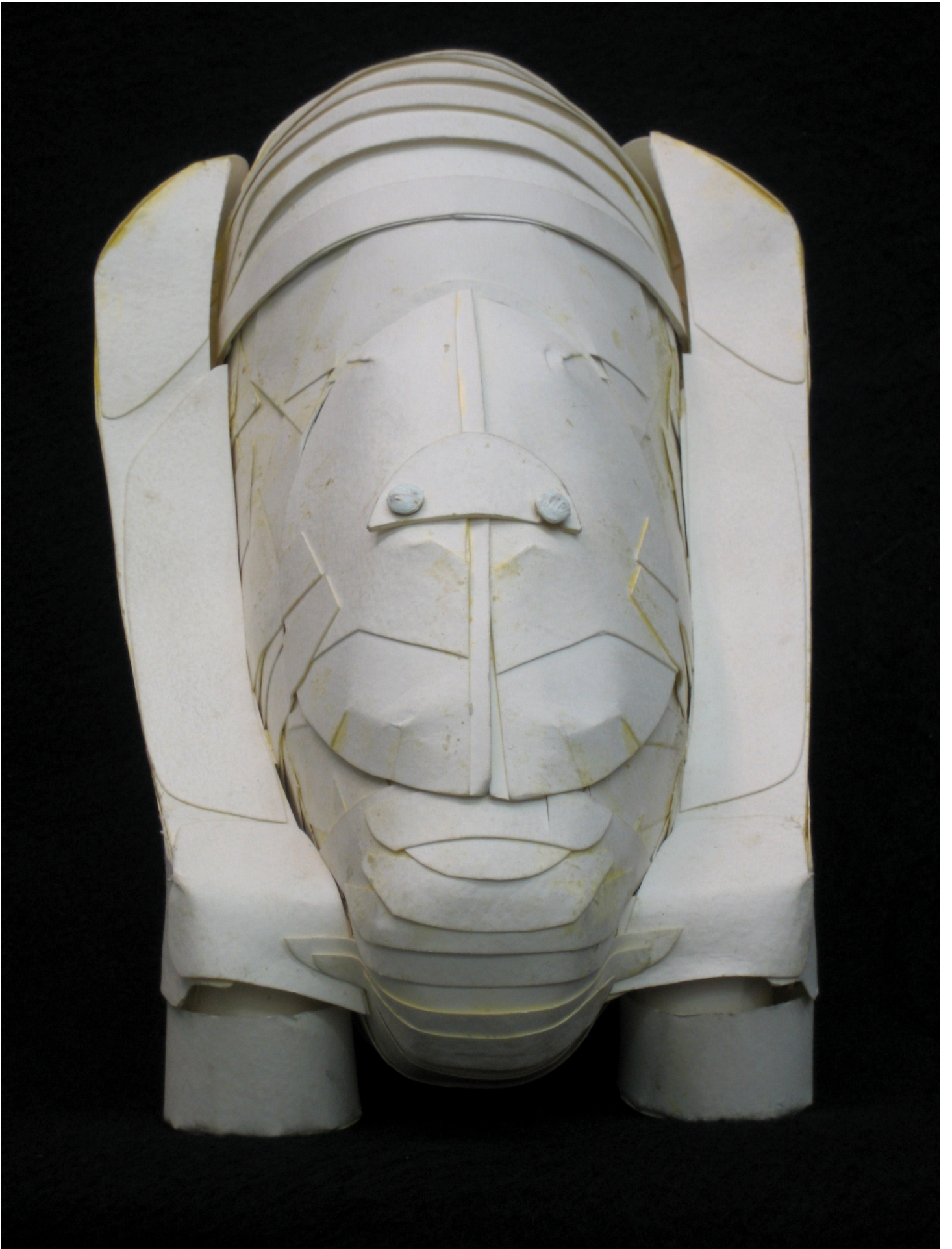
I hope to use the time-space travel device to generate a sense of infinite self and infinite others and connect the two.

By discovering and understanding the thoughts of others our minds travel light years. When our imagination/ spaceship makes it to that other planet the triumph of comprehension generates a euphoric awareness and mental expansion.

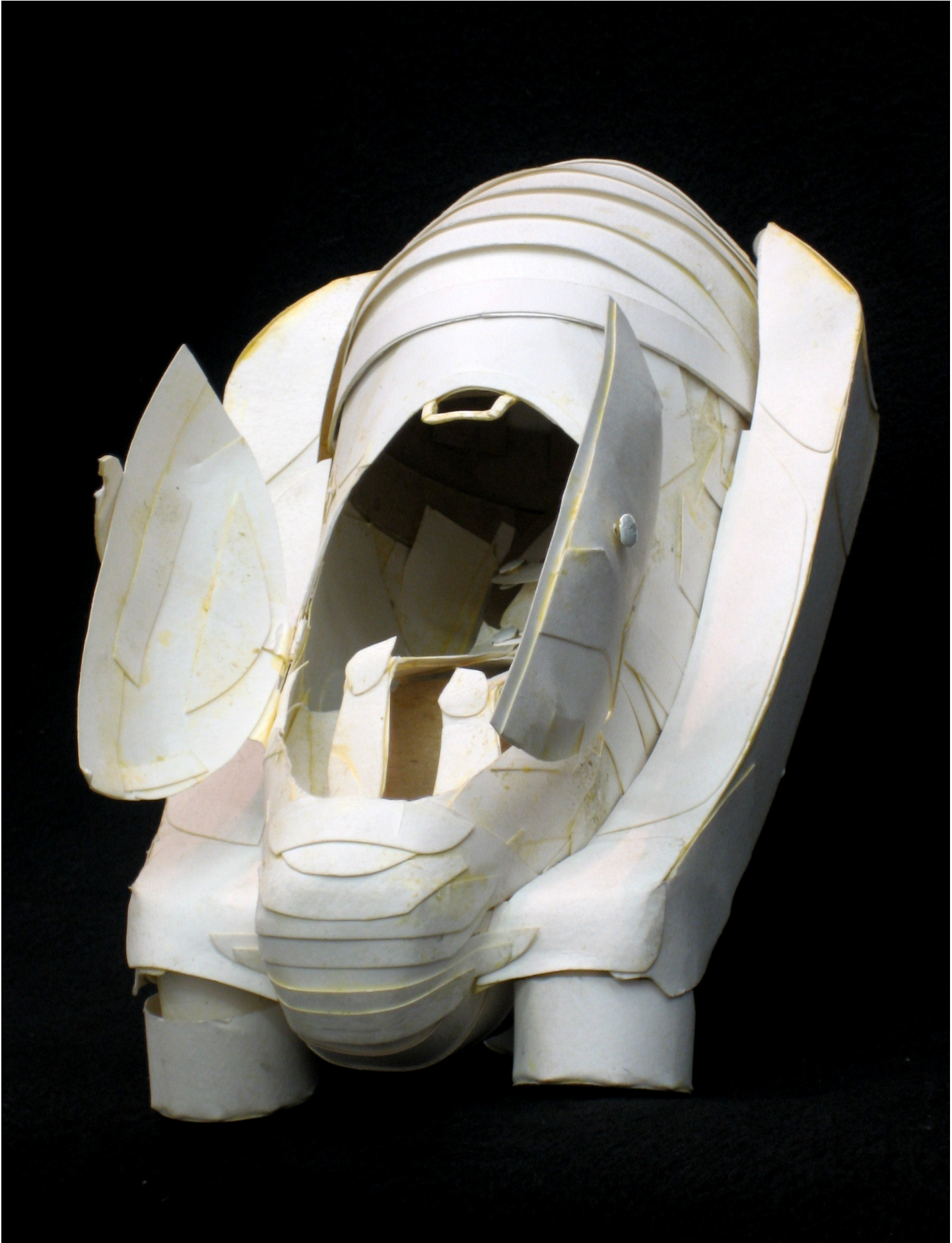
The armed conflict and conquest we have been forced to normalize as a part of our culture is obsolete and absurd in the face of this elated coupling.



-Seann Brackin







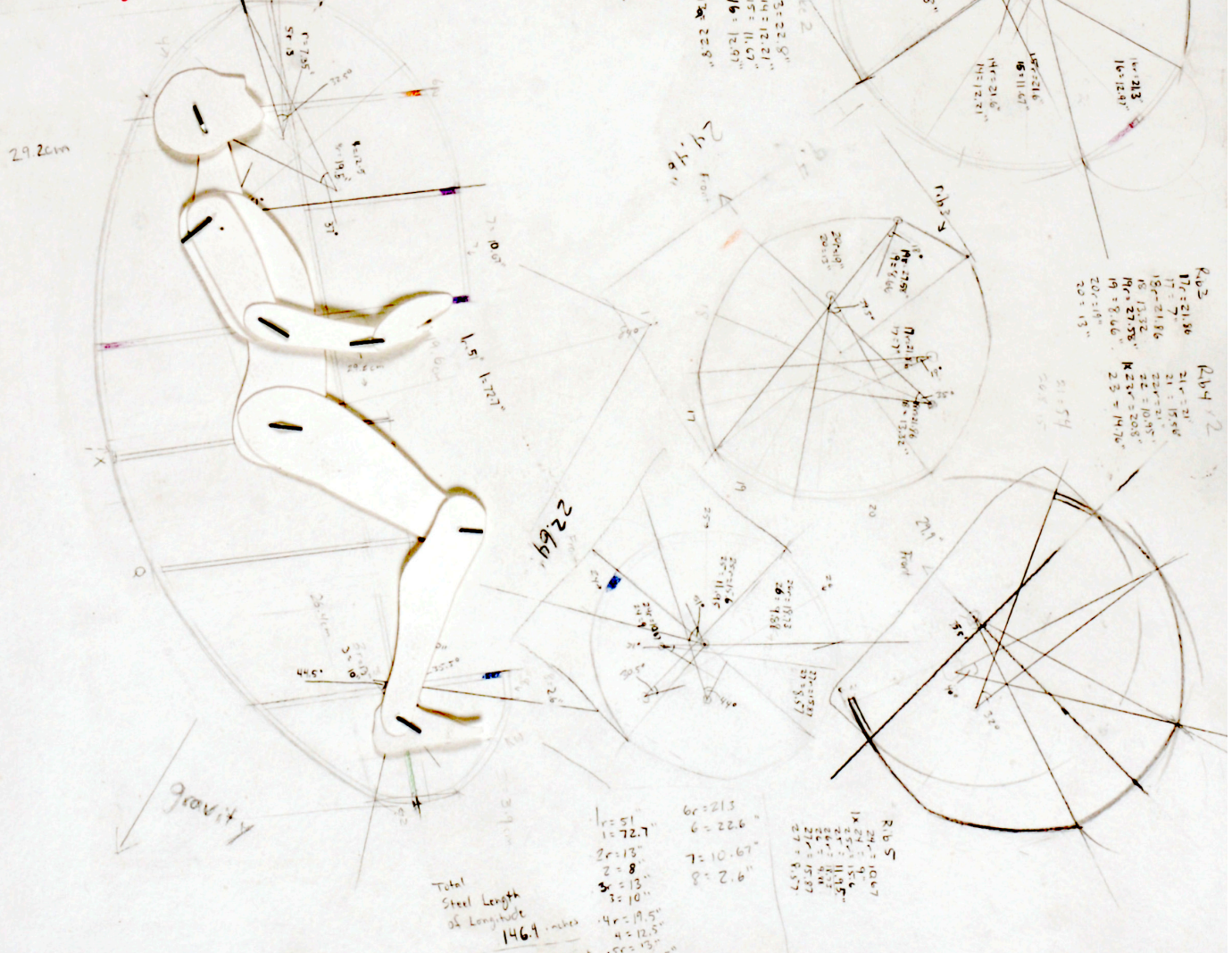
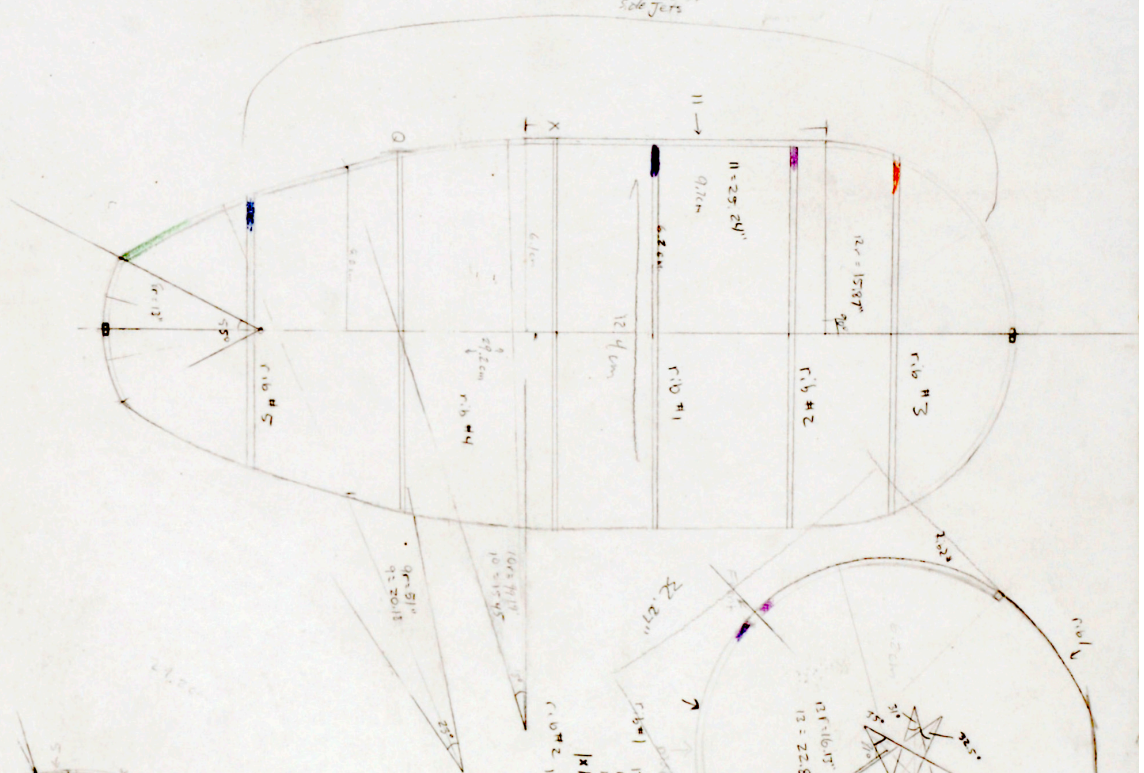




POD For Protection With Humanity

Design for
Sole Jers

- Length 146.9"
- Total Steel Length Total Steel
- Ribs #1 184"
- Ribs #2 106.83"
- Ribs #3 45.6"
- Ribs #4 83.96"
- Ribs #5 67.78"
- Ribs #6 67.78"
- Ribs #7 67.78"
- Ribs #8 67.78"
- Ribs #9 67.78"
- Ribs #10 67.78"
- Ribs #11 67.78"
- Ribs #12 67.78"
- Ribs #13 67.78"
- Ribs #14 67.78"
- Ribs #15 67.78"
- Ribs #16 67.78"
- Ribs #17 67.78"
- Ribs #18 67.78"
- Ribs #19 67.78"
- Ribs #20 67.78"
- Ribs #21 67.78"
- Ribs #22 67.78"
- Ribs #23 67.78"
- Ribs #24 67.78"
- Ribs #25 67.78"
- Ribs #26 67.78"
- Ribs #27 67.78"
- Ribs #28 67.78"
- Ribs #29 67.78"
- Ribs #30 67.78"
- Ribs #31 67.78"
- Ribs #32 67.78"
- Ribs #33 67.78"
- Ribs #34 67.78"
- Ribs #35 67.78"
- Ribs #36 67.78"
- Ribs #37 67.78"
- Ribs #38 67.78"
- Ribs #39 67.78"
- Ribs #40 67.78"
- Ribs #41 67.78"
- Ribs #42 67.78"
- Ribs #43 67.78"
- Ribs #44 67.78"
- Ribs #45 67.78"
- Ribs #46 67.78"
- Ribs #47 67.78"
- Ribs #48 67.78"
- Ribs #49 67.78"
- Ribs #50 67.78"
- Ribs #51 67.78"
- Ribs #52 67.78"
- Ribs #53 67.78"
- Ribs #54 67.78"
- Ribs #55 67.78"
- Ribs #56 67.78"
- Ribs #57 67.78"
- Ribs #58 67.78"
- Ribs #59 67.78"
- Ribs #60 67.78"
- Ribs #61 67.78"
- Ribs #62 67.78"
- Ribs #63 67.78"
- Ribs #64 67.78"
- Ribs #65 67.78"
- Ribs #66 67.78"
- Ribs #67 67.78"
- Ribs #68 67.78"
- Ribs #69 67.78"
- Ribs #70 67.78"
- Ribs #71 67.78"
- Ribs #72 67.78"
- Ribs #73 67.78"
- Ribs #74 67.78"
- Ribs #75 67.78"
- Ribs #76 67.78"
- Ribs #77 67.78"
- Ribs #78 67.78"
- Ribs #79 67.78"
- Ribs #80 67.78"
- Ribs #81 67.78"
- Ribs #82 67.78"
- Ribs #83 67.78"
- Ribs #84 67.78"
- Ribs #85 67.78"
- Ribs #86 67.78"
- Ribs #87 67.78"
- Ribs #88 67.78"
- Ribs #89 67.78"
- Ribs #90 67.78"
- Ribs #91 67.78"
- Ribs #92 67.78"
- Ribs #93 67.78"
- Ribs #94 67.78"
- Ribs #95 67.78"
- Ribs #96 67.78"
- Ribs #97 67.78"
- Ribs #98 67.78"
- Ribs #99 67.78"
- Ribs #100 67.78"

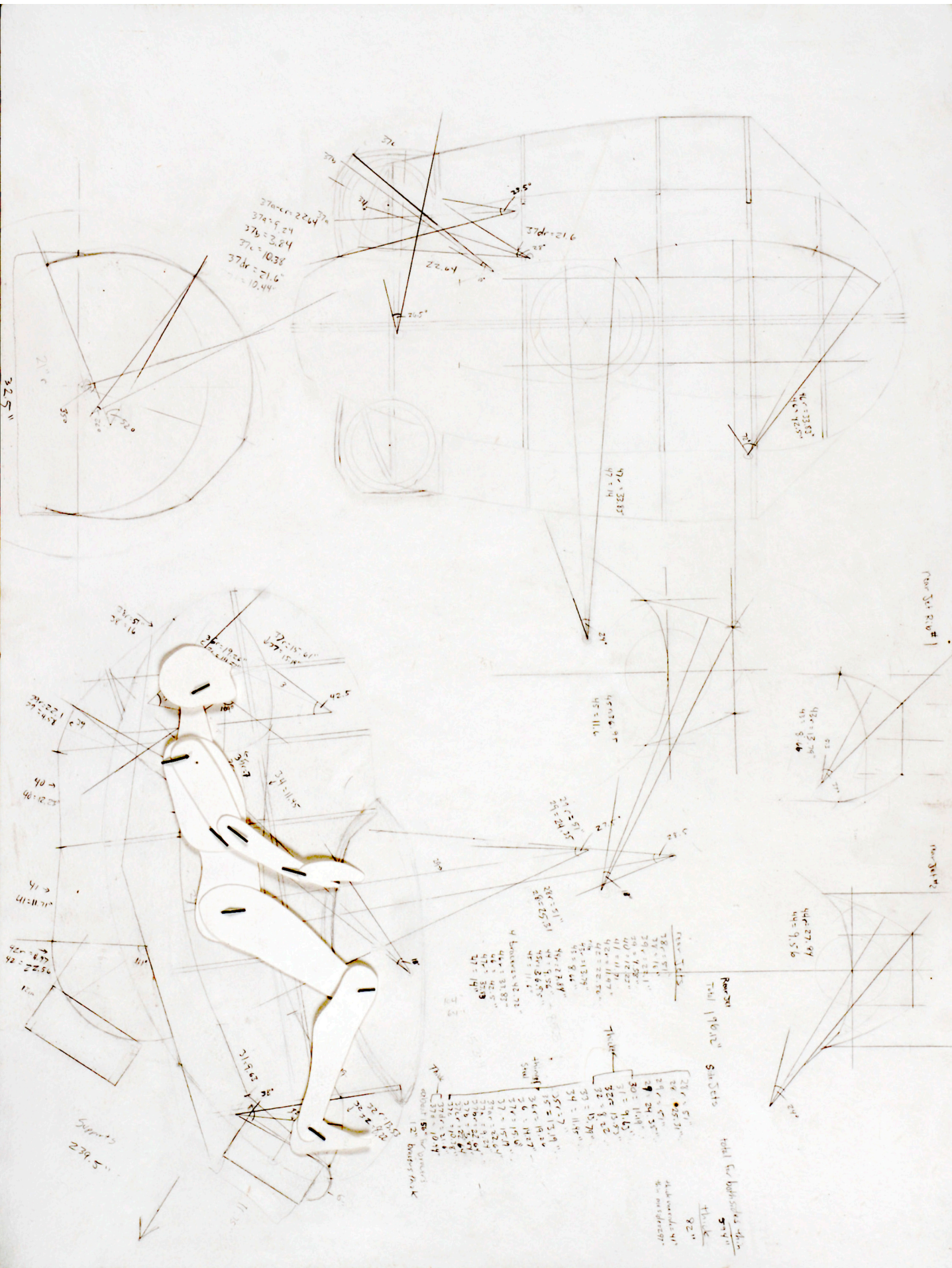


29.2cm

Gravity

Total Steel Length of Length 146.9 inches

- R.B.S
- 1x 24 = 10.67
- 2x 24 = 15.64
- 3x 24 = 15.64
- 4x 24 = 15.64
- 5x 24 = 15.64
- 6x 24 = 15.64
- 7x 24 = 15.64
- 8x 24 = 15.64
- 9x 24 = 15.64
- 10x 24 = 15.64
- 11x 24 = 15.64
- 12x 24 = 15.64
- 13x 24 = 15.64
- 14x 24 = 15.64
- 15x 24 = 15.64
- 16x 24 = 15.64
- 17x 24 = 15.64
- 18x 24 = 15.64
- 19x 24 = 15.64
- 20x 24 = 15.64
- 21x 24 = 15.64
- 22x 24 = 15.64
- 23x 24 = 15.64
- 24x 24 = 15.64
- 25x 24 = 15.64
- 26x 24 = 15.64
- 27x 24 = 15.64
- 28x 24 = 15.64
- 29x 24 = 15.64
- 30x 24 = 15.64
- 31x 24 = 15.64
- 32x 24 = 15.64
- 33x 24 = 15.64
- 34x 24 = 15.64
- 35x 24 = 15.64



37a=22.6
 37b=9.24
 37c=3.84
 37d=10.38
 37e=21.6
 37f=10.44

Row 201
 Total 160" 5in 201
 Total for 160" 5in 201
 28 x 51
 29 x 51
 30 x 51
 31 x 51
 32 x 51
 33 x 51
 34 x 51
 35 x 51
 36 x 51
 37 x 51
 38 x 51
 39 x 51
 40 x 51
 41 x 51
 42 x 51
 43 x 51
 44 x 51
 45 x 51
 46 x 51
 47 x 51
 48 x 51
 49 x 51
 50 x 51
 51 x 51
 52 x 51
 53 x 51
 54 x 51
 55 x 51
 56 x 51
 57 x 51
 58 x 51
 59 x 51
 60 x 51
 61 x 51
 62 x 51
 63 x 51
 64 x 51
 65 x 51
 66 x 51
 67 x 51
 68 x 51
 69 x 51
 70 x 51
 71 x 51
 72 x 51
 73 x 51
 74 x 51
 75 x 51
 76 x 51
 77 x 51
 78 x 51
 79 x 51
 80 x 51
 81 x 51
 82 x 51
 83 x 51
 84 x 51
 85 x 51
 86 x 51
 87 x 51
 88 x 51
 89 x 51
 90 x 51
 91 x 51
 92 x 51
 93 x 51
 94 x 51
 95 x 51
 96 x 51
 97 x 51
 98 x 51
 99 x 51
 100 x 51

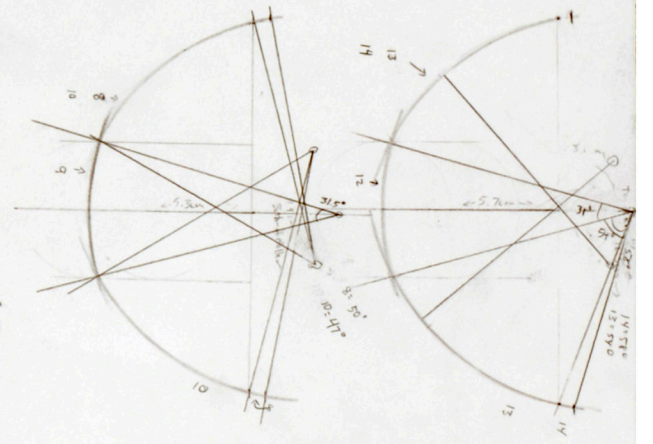
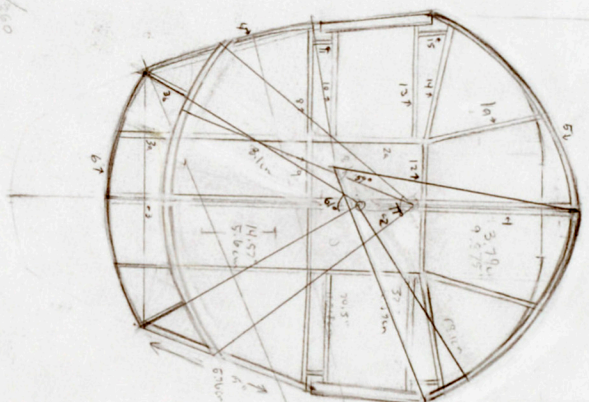
239.5"



$Zr = D$
 $Dn = C$
 C angle length drawing

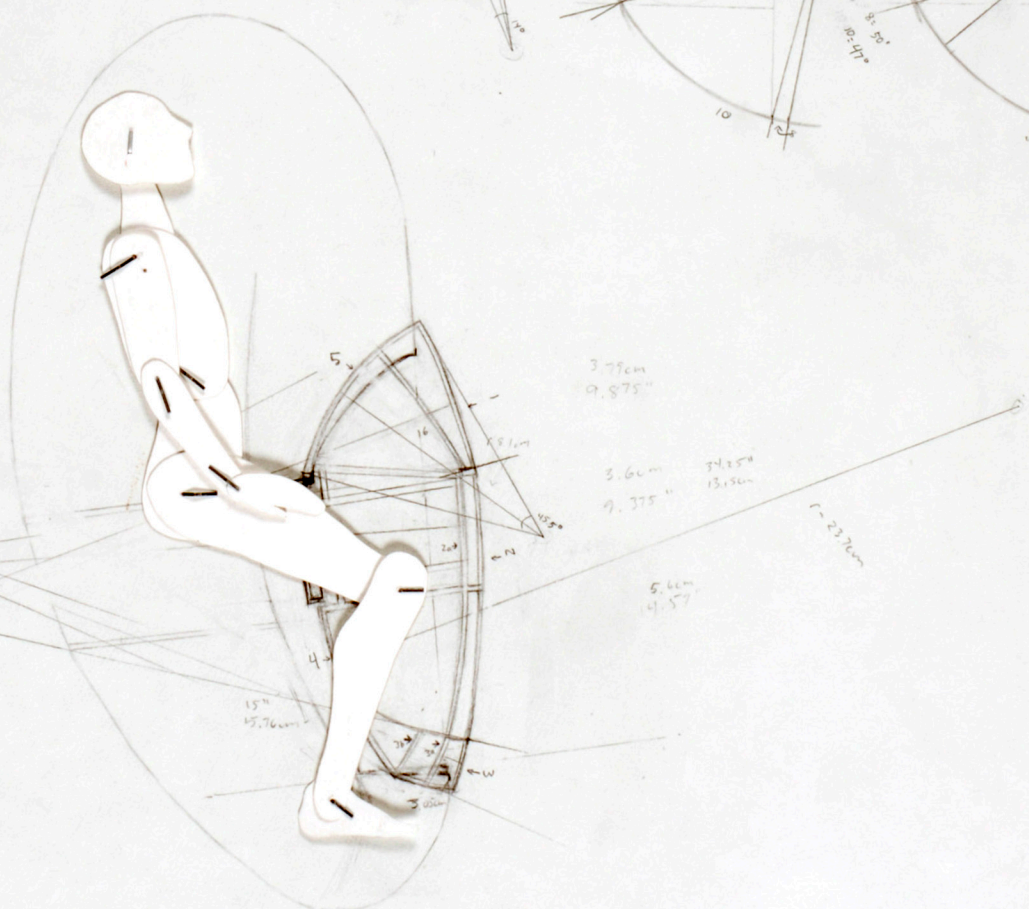
Length of cap 9.60

- $r = 22.7 = 61.68$
- $c = 10.8$
- $c = 3.57154$
- $r \times 11 = 21.05$
- $c = 50.81cm$
- $c = 13.245$
- $2x 1 = 12.78$
- $10 = 61.68$
- $2x 10 = 12.78$
- $2r = 61.68$
- $4x 2 = 22.47$
- $2x 3 = 4.89$
- $2x 3.84 = 7.68$
- $2x 3.24 = 6.48$
- $4 = 14.16$
- $2x 4 = 14.72$
- $5r = 21.05$
- $2x 5 = 21.58$
- $6r = 21.58$
- $7r = 21.05$
- $8r = 21.05$
- $9r = 21.05$
- $10r = 21.05$
- $11r = 21.05$
- $12r = 21.05$
- $13r = 21.05$
- $14r = 21.05$
- $15r = 21.05$
- $2x 15 = 21.05$



Total lengths
 $r = 61.68 = 208.18$
 $r = 21.05 = 248.716$
 Total cut of cap 9.60 ends

$29.2 cm = 7$ inches
 $3.8421 cm = 1$ inch



$3.77cm$
 9.875
 $3.6cm$
 9.375
 $34.5cm$
 $13.5cm$
 $5.6cm$
 14.57
 $r = 23.7cm$

